

## Rochester Music Guild, mini-newsletter

Rochester Music Guild, Communications Chair <communications@rochestermusicguild.org>

Sun 9/29/2019 7:36 PM

To: aprilhornemp@hotmail.com <aprilhornemp@hotmail.com>

[View this email in your browser](#)



## Welcome to fall!

We're trying something new - just-in-time newsletters. We hope these more frequent, but smaller newsletters will do a better job of reaching people with interesting, just-in-time content. In this newsletter, you will find information about the upcoming Rochester Symphony Orchestra Concert, the Leadership in Arts Fete, and other opportunities to bring more music to your life.



## ROCHESTER SYMPHONY: HAIL THE CENTENNIAL!

*Prepared from content submitted by Jere Lantz, Rochester Symphony CEO & Artistic Director*

The Rochester Symphony (then called the Philharmonic Orchestra of Rochester) gave its first concert on January 1, 1920, at 4 pm at the Armory. While 1919-1920 was the first season, in 1919 there were only rehearsals.

The first concert in the centennial season (October 12th at 7:30 & 13th at 2:30 at Lourdes High School) is titled "A Century Together." The Symphony will help us recall moments in history and look toward the future, always focusing on the relationship between the Symphony and the City.

The program opens with Fanfare for Orchestra, which Rochester's own Kevin Dobbe composed for the 75th anniversary in 1994. Dr. Dobbe noted that the very act of attending a concert "is a statement of our commitment to the goal of understanding, of sharing, of being human." This will be followed by two pieces performed on January 1, 1920 but that aren't often performed now: Massenet's Overture to Phèdre and Grieg's Last Spring. Both are wonderfully romantic. There will be two extraordinary pieces about cities, and four works by Minnesota composers, including two pieces by Stephen Paulus which we will perform with the Chorale. The concert will close with a reprise of "Sing" by Torres Hodges which premiered at last years MLK concert.

Please join the Symphony as they start their centennial celebration. And on Thursday, October 24th between 6:00 and 8:00, the History Center invites the public to the unveiling of their exhibit about the Symphony, tentatively titled "A Centennial Celebration and Retrospective."

Happy 100th!

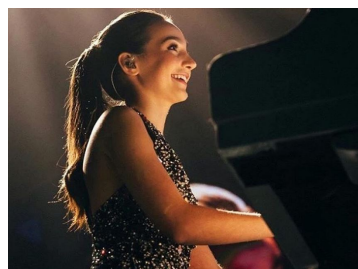
---

*Prepared from content submitted by Bari Amadio, secretary, Greater Rochester Arts and Cultural Trust*

The Ardee Award, named in recognition of Mayor Ardell F. Brede's enduring support of the Arts, celebrates excellence in the arts. The Leadership in the Arts award recognizes an individual or organization from the business, legal, arts or civic sectors whose work has had a significant impact on Rochester's cultural landscape. It is with great pleasure that the Greater Rochester Arts and Cultural Trust announces that Maestro Jere Lantz has been selected for the Leadership in the Arts Ardee Award; Emily Lin Deng has been selected for the Outstanding Youth in Arts Ardee Award.



We believe it goes without saying that Maestro Lantz's impact on Rochester's cultural landscape over decades has resulted in one of the finest symphony orchestras in the state, and is a cultural asset to the greater Rochester area. Emily Lin Deng's dexterity and musicality on the piano has resulted in many awards, and her leadership is noted as a member of the Rochester Chamber Music Society board. Maestro Lantz and Emily Lin Deng will be awarded their Ardees at the Trust's Fete event on Tuesday, October 22 at the Mayo Civic Center's Presentation Hall.



As part of the Fete, Internationally-renowned, Award-winning Special Guest Artist Emily Bear will be performing in concert. Emily is a composer, pianist, singer, songwriter in the fields of classical, jazz, pop and film-scoring. And she is still in her teens! She has performed around the world, including at the White House and on the Ellen DeGeneres Show.

Tickets for the Fete and concert can be purchased at [www.mayociviccenter.com](http://www.mayociviccenter.com) or in person at the Mayo Civic Center box office. Additional information can be found at <https://rochartstrust.org/>

We want to thank Shirley Edmonson for her support of The Rochester Music Guild through her gifts to the John H. Edmonson endowment fund. Shirley is one of many generous donors who support the activities of the guild. Please go to our [webpage](#) to see a [list of scholarship sponsors](#).

## UPCOMING EVENTS

For more information, go to [The Rochester Music Guild Calendar](#).

All events in Rochester unless otherwise noted.

**Friday, October 4 – 7:30 p.m.**

**The Lyra Baroque Orchestra –  
Mount Olive Lutheran Church**

Adults: \$30, Seniors/MPR Members:  
\$25, Students: \$5,

[lyrabaroque.org/concerti](http://lyrabaroque.org/concerti)

**Sunday, October 6 – 3 p.m.**

**Compass Rose Brass Ensemble –  
Zumbro Lutheran Church,  
Rochester**

Adults: \$10, kids under 18

\$5, [compassrosebrass.com/](http://compassrosebrass.com/)

**Friday, October 11 – 12:00 p.m.**

**Gao Hong, Chinese pipa player –  
Christ United Methodist Church**

**Sunday, October 27 — 6:30 p.m.**

[Rochester Pops Orchestra](#) -  
**Spooktacular – Bethel Lutheran  
Church**

Tickets: seniors \$12, adults \$14,  
students \$7

**Sunday, November 3 – 3:00 p.m.**

**Mayo Clinic Chamber Symphony –  
Mount Olive Lutheran Church,**

Tickets at the door: \$7 adults, \$3  
children

**Friday, November 8 – 12:00 p.m.**

**Victrola Jockey Todd Juzwiak –  
Christ United Methodist Church  
Free, Rochester Music Guild [Lunch](#)**

Free, Rochester Music Guild **Lunch & Learn**

**Saturday, October 12 – 7:30 p.m.,**

**Sunday, October 13 – 2:00 p.m.**

**Rochester Symphony – Lourdes High School**

Adults: \$20, \$30, Youth \$5,

[rochestersymphony.org](http://rochestersymphony.org)

**Sunday, October 13 — 4 p.m.**

**Duo-B, violin & cello — First Presbyterian Church, 512 Third St. SW**

Free will offering,

[www.fpcrochester.org](http://www.fpcrochester.org)

**Tuesday, October 22 — 7 p.m.**

**The Fête with Special Guest Artist Emily Bear, Mayo Civic Center, Presentation Hall**

\$90 VIP, \$35 Adults, \$20 Students,

[mayociviccenter.com](http://mayociviccenter.com)

**Saturday, October 26 — 7:30 p.m.**

**Hector Olivera, Organ – Co-Cathedral of St. John the Evangelist**

\$20

**& Learn**

**Saturday, November 10 – 2:00 p.m.**

**Rochester Symphony – Bethel Lutheran Church – Free**

**Monday, November 11 – 6:00 p.m.**

**Community Education Adult Enrichment: “When We Began” – Join Maestro Jere Lantz – Kellogg Middle School, Room 115**  
\$9 - [Rochesterce.org/register](http://Rochesterce.org/register)

**Friday, November 15 – 7:00 pm**

**Rochester Symphony – Mayo Civic Center Presentation Hall**  
Rochester Symphony: 1919 – Free Family Preview

[rochestersymphony.org](http://rochestersymphony.org)

**Saturday, November 16 – 7:30 p.m.**

**Rochester Symphony: 1919 – Mayo Civic Center Presentation Hall**

Adults: \$20,30, Youth \$5

[rochestersymphony.org](http://rochestersymphony.org)

**Sunday, November 17 – 4 p.m.**

**Chelsea Chen, concert organist and composer – First Presbyterian**

**Saturday, October 26 – 7:30 p.m.**  
**Rochester Chamber Music Society**  
**– Christ United Methodist Church**

**Church, 512 Third St SW**

Free will offering

[www.fpcrochester.org](http://www.fpcrochester.org)

Free,

<http://www.rochesterchambermusic.org/>

For a list of current board members, go to <https://rochestermusicguild.org/>



---

To renew your membership, go to our [Members page](#).

**Our mailing address is:**

**Rochester Music Guild**

P.O. Box 5802

Rochester, MN 55903-5802

Want to change how you receive these emails?

You can [update your preferences](#) or [unsubscribe from this list](#).

---

This email was sent to [aprilhornepmp@hotmail.com](mailto:aprilhornepmp@hotmail.com)

9/29/2019

Mail - April Horne - Outlook

[why did I get this?](#) [unsubscribe from this list](#) [update subscription preferences](#)

Rochester Music Guild · P.O. Box 5802 · Rochester, MN 55903-5802 · USA

